

---

**BlahBlah**  
**type specimen**

**BlahBlah Solid**

BlahBlah Blah Blah

**BlahBlah Soft**

BlahBlah Blah Blah

Counterrevolutionary

Bevásárlóközpontban

PHENOMENOLOGICALLY

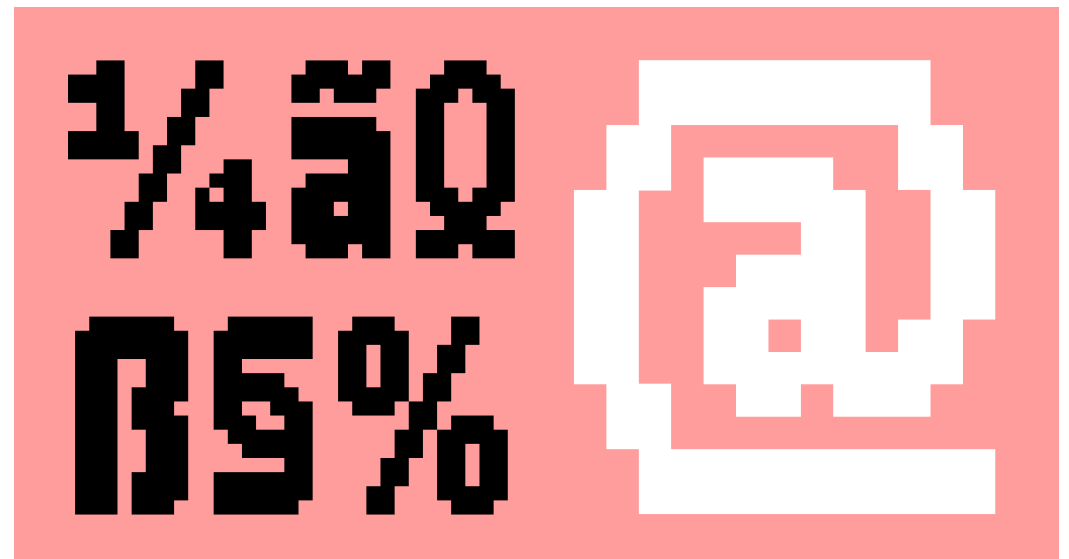
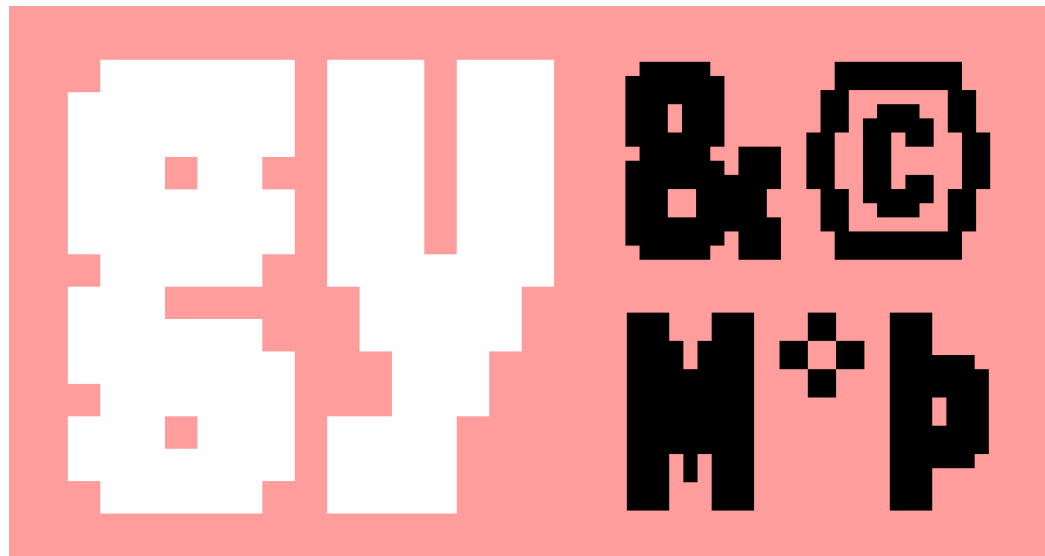
Agterwiel aandrywing

---

électromagnétiquement ahvenjärvi  
appetitelech alkylbenzenesulfonate  
molekylorbitaltheorie zwaluwveer  
cylchredol eftersøgningsmandskab  
alpjøðahvalveiðiráðið issuðgerixka  
affärsområde przetransportowany

---

**caracterizações** **PREDETERMINAU**  
**KOMPASGLAASJE** **afroamerikiečių**  
**irrégulièrement** **KÜÇÜKLÜĞÜNDE**  
**AERODYNAMICKÝ** **forgivingnesses**  
**hooldajaõpetaja** **KLOSTERSTRASSE**



**TRANBLEMANTE** **bedriftsøkonom**  
**bracelethorloço** **CERÁMICAMENTE**  
**AUÐSJÁANLEGUR** **autoconvincersi**  
**južnoslavenskoj** **FJELLOMRÅDENE**  
**MÖTARBHEALACH** **itsetyytyväinen**

Q q R r S s T t U u V v W w X x Y y Z z

AA aa BB bb CC cc DD dd EE ee FF ff GG gg HH hh II ii JJ jj KK kk LL ll MM mm NN nn OO oo PP pp QQ qq RR rr SS ss TT tt UU uu VV vv WW ww XX xx YY yy ZZ zz

0 1 2 3 4 5 6 7 8 9 A B C D E F G H I J K L M N O P Q R S T U V W X Y Z

! " # \$ % & ' ( ) \* + , - . / : ; < = > ? @ [ \ ] ^ \_ ` { | } ~

BlahBlah type specimen — 7 / 23 — BlahBlah Matrix

BlahBlah type specimen — 7 / 23 — BlahBlah Matrix

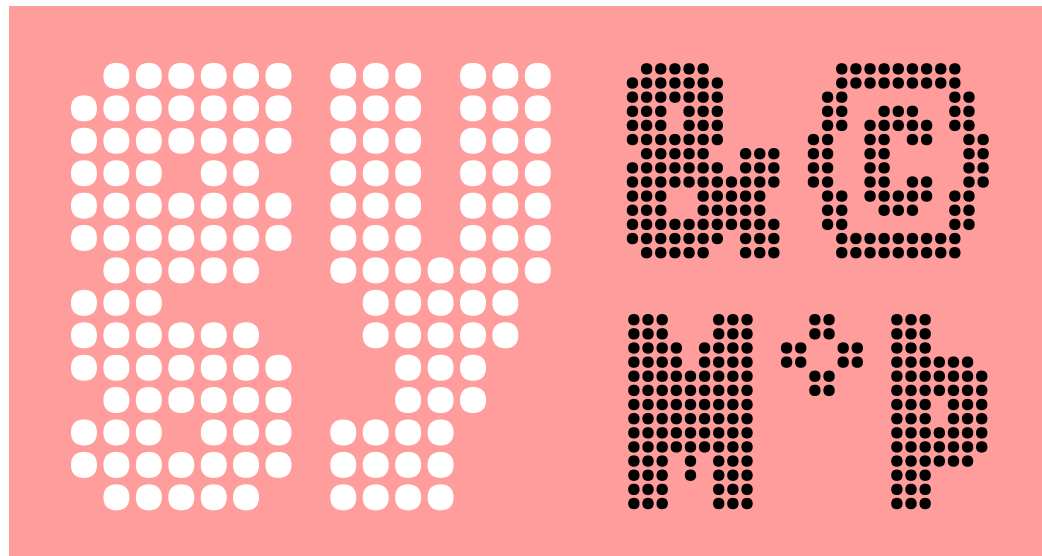
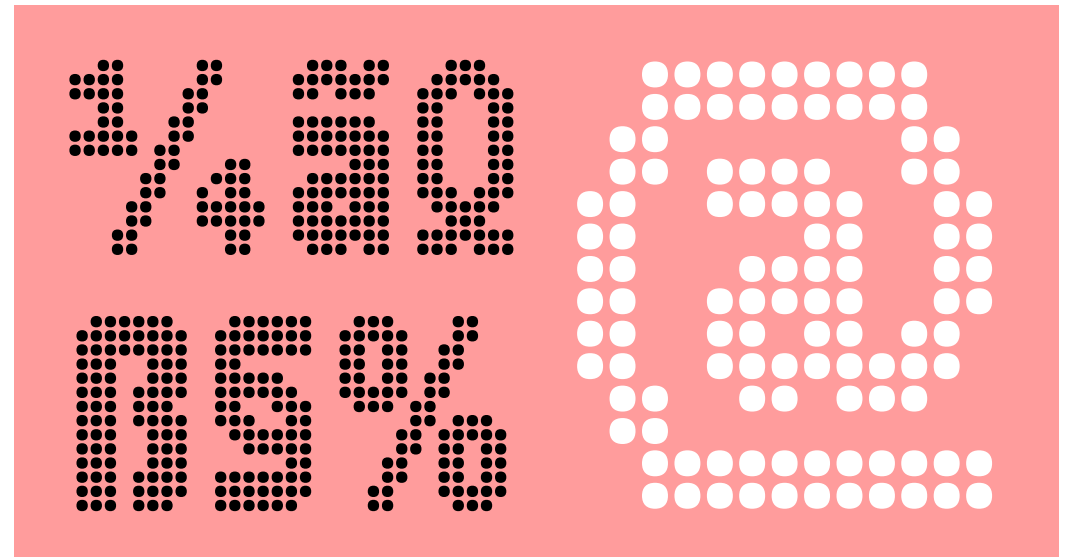
BlahBlah type specimen — 7 / 23 — BlahBlah Matrix

BlahBlah type specimen — 7 / 23 — BlahBlah Matrix

BlahBlah type specimen — 7 / 23 — BlahBlah Matrix

BlahBlah type specimen — 7 / 23 — BlahBlah Matrix

caracterizações	PREDETERMINAU
KOMPASCLAASJE	afroamerikiečių
irregulièrement	KÜÇÜKLÜCÜNDEN
AERODYNAMICKÝ	forgivenesses
hooldajaõpetaja	KLOSTERSTRABE



TRANBLEMANNTÈ	bedriftsøkonom
bracelethorloço	CERÁMICAMENTE
AUDSJÁANLEGUR	autoconvincersi
južnoslavenskoj	FJELLOMRÁDENE
MÖTARBHEALACH	itsetyytyväinen



Counterrevolutionary

Bevásárlóközpontban

PHENOMENOLOGICALLY

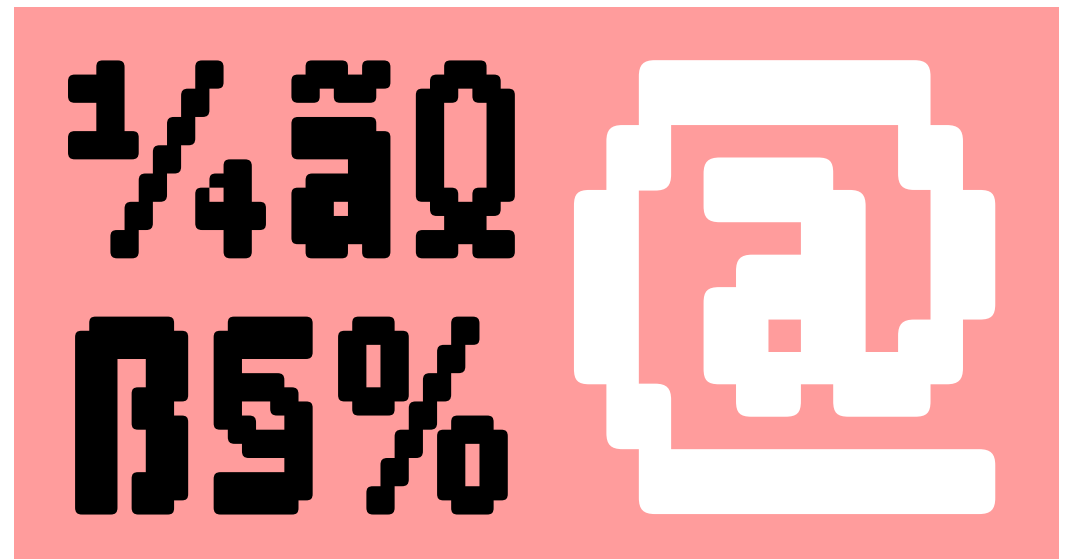
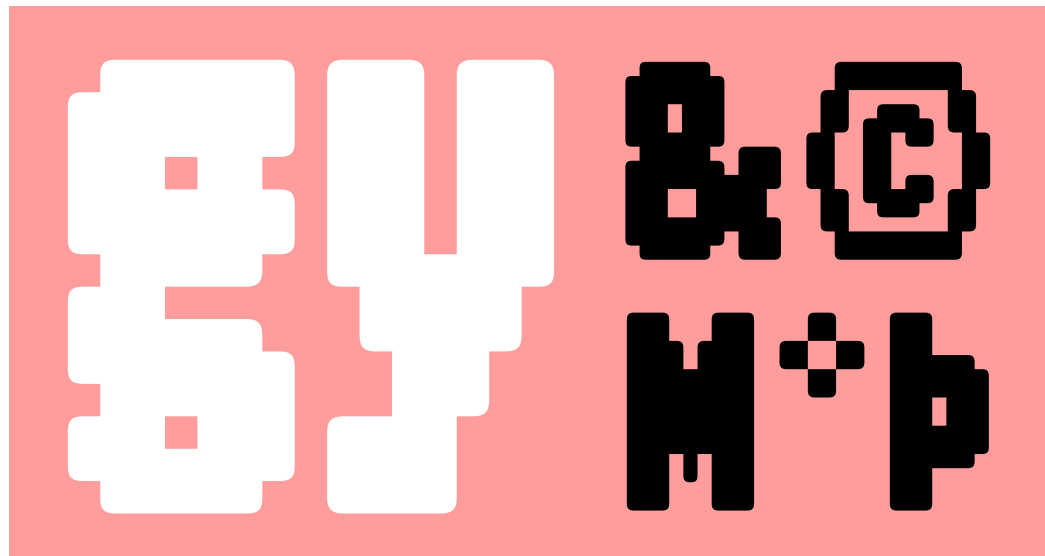
Agterwiel aandrywing

---

électromagnétiquement ahvenjärvi  
appetitelech alkylbenzenesulfonate  
molekylorbitaltheorie zwaluwveer  
cylchredol eftersøgningsmandskab  
alpjøðahvalveiðiráðið issuðgerixxa  
affärsområde przetransportowany

---

**caracterizações** **PREDETERMINAU**  
**KOMPASGLAASJE** **afroamerikiečių**  
**irrégulièrement** **KÜÇÜKLÜĞÜNDE**  
**AERODYNAMICKÝ** **forgivingnesses**  
**hooldajaõpetaja** **KLOSTERSTRASSE**



**TRANBLEMANTE** **bedriftsøkonom**  
**bracelethorloço** **CERÁMICAMENTE**  
**AUDSJÁANLEGUR** **autoconvincersi**  
**južnoslavenskoj** **FJELLOMRÁDENE**  
**MÖTARBHEALACH** **itsetyytyväinen**

CUMMILLON

WASSAINT

PHEMENSELLUCCALLY

WASSAINT

---

electromagnétique ahvenjärvi

appetitlich alkylbenzenesulfonate

molekylorbitaltheorie zwaluwveer

cylchredol eterspögningsmandskab

alpööahvalvelöräön issuğerixka

affärsområde przetransportowany

---

caracterizações **PREDETERMINAU**  
KOMPASGLAASJE afroamerikiečių  
irrégulièrement **KÜÇÜKLÜGÜNDEKİ**  
**AERODYNAMICKÝ** forgivenesses  
hooldajaõpetaja **KLOSTERSTRASSE**



**TRANBLEMANTE** bedriftsøkonom  
bracelethorloço **CERÁMICAMENTE**  
**AUDSJÁANLEGUR** autoconvincersi  
južnoslavenskoj **FJELLOMRÁDENE**  
**MÓTARBHEALACH** itsetyytyväinen

BlahBlah Solid

Telecommunications WRANGLES

BlahBlah Matrix

TELECOMMUNICATIONS WRANGLES

BlahBlah Soft

Greatgranddaughter MUDGUARD

BlahBlah Hatch

TELECOMMUNICATIONS WRANGLES

BlahBlah Solid

**Paleontological classifications previously used Hydrochoeridae for all capibaras, while using Hydrochoerinae for the living genus and its closest fossil relatives, such as Nechoerus, but more recently have adopted the classification of Hydrochoerinae within Caviidae. The taxonomy of fossil hydrochoerines is also in a state of flux.**

BlahBlah Hatch

Paleontological classifications previously used Hydrochoeridae for all capibaras, while using Hydrochoerinae for the living genus and its closest fossil relatives, such as Nechoerus, but more recently have adopted the classification of Hydrochoerinae within Caviidae. The taxonomy of fossil hydrochoerines is also in a state of flux.

BlahBlah Matrix

Paleontological classifications previously used Hydrochoeridae for all capibaras, while using Hydrochoerinae for the living genus and its closest fossil relatives, such as Nechoerus, but more recently have adopted the classification of Hydrochoerinae within Caviidae. The taxonomy of fossil hydrochoerines is also in a state of flux.

BlahBlah Soft

**Paleontological classifications previously used Hydrochoeridae for all capibaras, while using Hydrochoerinae for the living genus and its closest fossil relatives, such as Nechoerus, but more recently have adopted the classification of Hydrochoerinae within Caviidae. The taxonomy of fossil hydrochoerines is also in a state of flux.**





BlahBlah supports the following languages

**Afrikaans, Albanian, Asu, Azerbaijani, Basque, Bemba, Bena, Bosnian, Breton, Catalan, Capibarian, Cebuano, Chiga, Colognian, Cornish, Corsican, Croatian, Czech, Danish, Dutch, Embu, English, Esperanto, Estonian, Faroese, Filipino, Finnish, French, Friulian, Galician, Ganda, German, Gusii, Hawaiian, Hungarian, Icelandic, Ido, Inari Sami, Indonesian, Interlingua, Irish, Italian, Javanese, Jju, Jola-Fonyi, Kabuverdianu, Kalaallisut, Kalenjin, Kamba, Kikuyu, Kinyarwanda, Kurdish, Latvian, Lithuanian, Lojban, Low German, Lower Sorbian, Luo, Luxembourgish, Luyia, Machame, Makhuwa-Meetto, Makonde, Malagasy, Malay, Maltese, Manx, Maori, Meru, Mohawk, Morisyen, North Ndebele, Northern Sami, Northern Sotho, Norwegian Bokmål, Norwegian Nynorsk, Nyanja, Nyankole, Occitan, Oromo, Polish, Portuguese, Quechua, Romanian, Romansh, Rombo, Rundi, Rwa, Samburu, Sango, Sangu, Sardinian, Scottish Gaelic, Sena, Shambala, Shona, Slovak, Slovenian, Soga, Somali, South Ndebele, Southern Sotho, Spanish, Swahili, Swati, Swedish, Swiss German, Taita, Taroko, Teso, Tongan, Tsonga, Tswana, Turkish, Turkmen, Upper Sorbian, Uzbek, Vunjo, Walloon, Walser, Welsh, Western Frisian, Wolof, Xhosa and Zulu.**

---

<p>ENGLISH</p> <p>The capibara has a heavy, shoe box shaped body and short head, with reddish-brown fur on the upper part of its body that turns yellowish-brown underneath.</p>	<p>DANSK</p> <p>Flodsvinet har en tung æskeformet krop og et kort, snude-løst hoved; med en rødbrun pels på den øverste del af kroppen, mens den underste del er okker-farvet.</p>	<p>ROMÂNĂ</p> <p>Capybara are un corp greu, în formă de cutie de pantofi și un cap îngust, cu blană maro-roșcată în partea superioară a corpului și maro-gălbuie dedesubt.</p>	<p>POLSKI</p> <p>Kapibara ma ciężkie ciało w formie pudełka na buty uwieńczonego małą głową. Od strony grzbietu jej ciało jest pokryte czerwono-brązowym futrem, a od spodu żółto-brązowym.</p>
<p>FRANÇAIS</p> <p>Le capibara présente un corps un peu lourd, en forme de boîte à chaussure et une tête plutôt courte, un poil marron-roux sur le dos, qui vire au brun jaunâtre au niveau du ventre.</p>	<p>NEDERLANDS</p> <p>De capibara heeft een zwaar, schoenendoosvormig lichaam en een korte kop. De vacht is roodbruin op het bovenste deel en geelbruin aan de onderkant van het lichaam.</p>	<p>ITALIANO</p> <p>Il capibara ha un corpo pesante a forma di scatola da scarpe e una testa corta, con una pelliccia bruno-rossastra nella parte superiore del corpo che diventa bruno-giallastra nella parte inferiore.</p>	<p>BAHASA INDONESIA</p> <p>Kapibara punya badan yang berat seperti doos sepatu, pakai kepala yang agak pendek. Pakai bulu yang warna merah-coklat bagian atas badan dan kuning-coklat di bagian bawa.</p>
<p>DEUTSCH</p> <p>Das Capibara hat einen gedrungenen, an eine Schuhschachtel erinnernden, Körper und einen kurzen Kopf, mit rötlich-braunem Fell, das zum Bauch hin eine gelblich-braune Farbe annimmt.</p>	<p>LATVISKI</p> <p>Kapibarai ir smagnējs, mucveidīgs ķermenis un strupjš, četrkantīgs purns. Kapibaras kažoks ir sarkanbrūns mugurpusē, bet pāriet dzeltenbrūnā toni vēdera pusē.</p>	<p>BÄRNDÜTSCH</p> <p>Ds Capibara het e schwääre Körper wo usgseh wiene Schuehschachtle und e churze Chopf mit rötlech-bruunem Fääli am obere Teil vo sym Körper. Ds wird de gäge unge langsam gäublech-bruun.</p>	<p>SLOVENSKÝ</p> <p>Kapibara má ťažké telo v tvare škatule od topánok a krátku hlavu s červenohnedou srstou na hornej časti tela, ktorá sa pod ňou mení na žltohnedú.</p>
<p>ESPAÑOL</p> <p>El carpincho tiene un cuerpo pesado en forma de caja de zapatos y una cabeza corta, con pelaje marrón rojizo en la parte superior del cuerpo que se vuelve marrón amarillento en la parte inferior.</p>	<p>SVENSKA</p> <p>Capibaran har en tung skokartongsliknande kropp och ett kort huvud, med rödbrun päls på översidan av kroppen som övergår i gulbrunt undertill.</p>	<p>SUOMALAINEN</p> <p>Vesisiialla on raskas, kenkälaatikon muotoinen ruumiinrakenne ja lyhyt pää. Turkki on selästä punertavanruskea ja muuttuu vatsapuolelta kellertävän ruskeaksi.</p>	<p>NORSK</p> <p>Flodsvinet har en tung, skoeseformet kropp og et kort hode. Pelsen er rødbrun på ryggen, men går mot brungul på undersiden.</p>
<p>HRVATSKI</p> <p>Kapibara ima veliko i teško tijelo nalik na kutiju od cipela, dok joj je glava mala i kratka. Crveno-smeđe krzno proteže se gornjim dijelom tijela, a u donjem dijelu postaje žuto-smeđe.</p>	<p>PORTUGUES DO BRASIL</p> <p>À capivara tem um corpo retangular e pesado com uma cabeça curta, um pêlo marrom avermelhado na parte de cima do corpo, se tornado um marrom mais amarelado na parte de baixo.</p>	<p>TÜRK</p> <p>Kapibara, ağır, ayakkabı kutusu şeklinde bir gövdeye ve kısa bir kafaya sahiptir, vücudunun üst kısmında kırmızımsı-kahverengi kürk, altta sarımsı-kahverengiye dönüşür.</p>	<p>SERBIAN (LATIN)</p> <p>Kapibara ima teško telo, koje oblikom liči na kutiju za cipele i kratku glavu, sa crvenkasto-smeđim krznom na gornjem delu tela, koje postaje žučkastosmeđe odozdo.</p>

[SS01] simple lowercase a		[SUPS] superior numerals	
<b>a</b> → <b>ɑ</b>	<b>Hypobetalipoproteinemia</b>	<b>8</b> → <b>⁸</b>	<b>H 1234567890</b>
[SS02] simple lowercase g		[SINF] inferior numerals	
<b>g</b> → <b>Ɠ</b>	<b>Yogibogeybox</b>	<b>8</b> → <b>₈</b>	<b>H 1234567890</b>
[SS03] alternate lowercase y		[NUMR] numerators	
<b>y</b> → <b>Ƴ</b>	<b>Polytetrafluoroethylene</b>	<b>8</b> → <b>⁸</b>	<b>H 1234567890</b>
[SS04] alternate at-sign		[DNOM] denominators	
<b>@</b> → <b>Ⓐ</b>	<b>mailto: hello@caketype.com</b>	<b>8</b> → <b>₈</b>	<b>H 1234567890</b>
		[ZERO] dotted zero	
		<b>0</b> → <b>◌̇</b>	<b>humans on earth: 7,753,000,000 (2020)</b>
		[FRAC] fractions	
		<b>7/8</b> → <b>⁷⁄₈</b>	<b>1/2 1/4 3/4 1/5 3/5 4/5 1/6 5/6 1/7 2/7 3/7 4/7 5/7 1234/56789</b>
		[ORDN] ordinals	
		<b>ao</b> → <b>ᵃᵒ</b>	<b>8³ 37º</b>

#### ABOUT BLAHBLAH

The American Gothic style of sans serif was invented single-handedly by Morris Fuller Benton. Benton headed the design department at American Type Founders (ATF) and was their chief type designer in the early twentieth century. Pieter took a no-nonsense look at the condensed version of this enduring typographic genre and rebuilt it brick by brick – or should we say pixel by pixel? – to create BlahBlah. Challenging Huey Lewis’s philosophical theorem “It’s hip to be square,” Pieter broke out of the pixels’ angular confines with additional variants. He cut some corners (literally, not figuratively) for BlahBlah Soft, and rendered the letterforms with dots and 45-degree lines for BlahBlah Matrix and BlahBlah Hatch, respectively. But enough blahblah, take this fun face for a spin.



#### ABOUT CAKETYPE

Pieter van Rosmalen founded CakeType in 2004 primarily as a boutique to distribute some of his early typefaces. In 2008, Pieter started Bold Monday together with Paul van der Laan. The type foundry’s initial retail collection merged the CakeType library and Paul’s typefaces. However, some of Pieter’s older type designs didn’t really fit the Bold Monday library and remained in “the vault” – not Prince’s legendary vault but just as cool and mysterious. CakeType reopened its online doors in 2022 to serve as a vehicle for those hidden gems. This dedicated space allows them to shine in all their quirky glory.

#### ABOUT PIETER VAN ROSMALEN

Pieter van Rosmalen studied advertising and graphic design at Sint Lucas in Boxtel. He started dabbling in type design at a young age and licensed his early fonts through the iconic type foundry GarageFonts in the late nineties. In 2002, Pieter graduated from the postgraduate Type & Media program at the Royal Academy of Art (KABK) in The Hague. After working at various advertising and design firms – Het Hoofdbureau in Amsterdam and Teldesign in The Hague, among others – he decided to go it alone in 2004, when he founded graphic design agency CakeLab and type foundry CakeType. Since 2009, Pieter has mainly focused on typeface design. His work has received several Certificates of Excellence from the Type Directors Club, and he won second prize in the prestigious Granshan Type Design Competition in 2019.

#### ABOUT CAPIBARA KEES

Capibara Kees – the Dutch first name Kees sounds like “case” – was born in the Amazon river delta in Brazil. The dashing dude’s date of birth is unknown. Kees belongs to the Capibara (or Capybara) species, the largest living rodent on planet earth. In mid-2001, Kees traveled to The Hague to study graphic and type design at KABK, where he met Pieter. Banding together to form a creative powerhouse, Pieter and Kees designed the Capibara typeface and the corresponding specimen “Heer van het gras.” Kees was integral in naming Pieter’s type foundry in 2004 – quite literally, because CakeType is short for CApibara KEes TYPE Foundry. How’s that for a surprise ending? Did you really think this was all about dessert?

#### FONT FORMATS

All our typefaces are provided in OTF, TTF and WOFF2 formats. You can install the fonts on your desktop, serve them on websites using CSS @font-face, or embed them in mobile apps and e-books. Other web formats - WOFF and EOT - are available on request.

#### LICENSES

We offer clear and simple licenses which can be purchased by one simple mouse click or finger tap. Our licenses are perpetual and do not require subscription. If you outgrow your current license, you can upgrade by buying the same license again to stack the amount of users, domains and apps/ebooks, or by buying a larger license.

##### SMALL LICENSE

desktop: 1 user  
web: 1 domain - 50,000 unique visitors p/m  
app/e-book: 1

[More information](#)

##### MEDIUM LICENSE

desktop: 10 users  
web: 5 domains - 500,000 unique visitors p/m  
app/e-book: 5

[More information](#)

##### LARGE LICENSE

desktop: 25 users  
web: 10 domains - 1,000,000 unique visitors p/m  
app/e-book: 10

[More information](#)

##### TRIAL LICENSE

You can use our free trial fonts for evaluation and internal testing only. The trial fonts have a limited character set and no OpenType features or kerning.

[More information](#)

##### CUSTOM LICENSE

If none of the licenses above fit your needs, please get in touch for a custom license to accommodate your particular preferences and requirements.

[Get in touch](#)

##### STUDENT DISCOUNT

We offer a student discount on all our typefaces. E-mail us a copy of your valid student ID and we will send you a voucher code for a 50% discount in return.

[Get in touch](#)

#### FOUNDRY ADDRESS

CakeType  
Johannes Buijslaan 36  
5652 NL Eindhoven  
The Netherlands  
Earth

---

#### WEBSITE

[caketype.com](http://caketype.com)

---

#### EMAIL

[hello@caketype.com](mailto:hello@caketype.com)

Because we work between 09.00 and 18.00 Central European Time (CET), it can happen that there is a little delay in responding.

---

#### SOCIAL MEDIA

[Instagram](#)  
[Twitter](#)

---

